

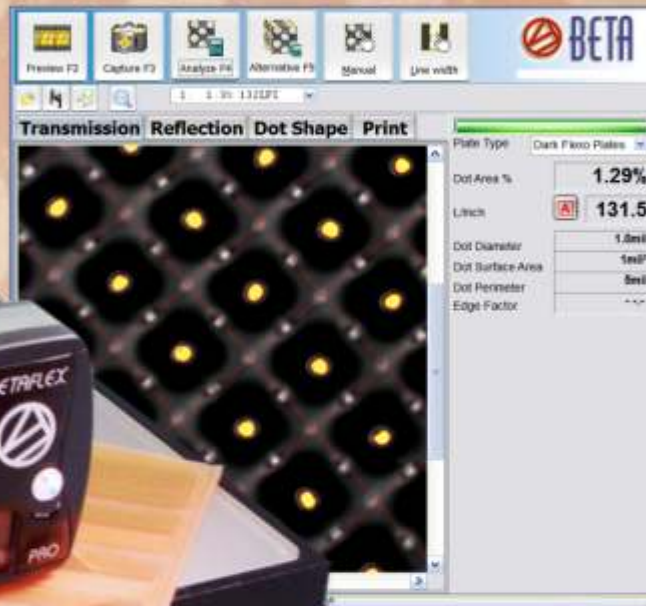
BETA FLEXPRO

Flexo System Analyzer

The Precise &
Productive
Tool For
Today's Flexo

Measure: HD FLEXO

- Flexo Plates • Laser Masks • Film
- Offset Plates • Prints
- Stain Density



Verify:

- Halftone Dot Area
- Screen Frequency
- Bar Code Line Width

NEW!

DOT STRUCTURE INDEX

Topographical Visualization
and 3-D Imaging Assures
Highlight Dot Integrity

Catch Expensive Errors
Before they Propagate
Through the System

SAVE • TIME • MONEY • MATERIAL

The Key to High Quality Flexo



 **BETA INDUSTRIES**
The Quality Control Company

Contact Beta or Your Dealer
for a **Free 10-Day Trial**
www.betascreen.com
www.betascreen.net

707 Commercial Ave. Carlstadt, NJ 07072 USA Tel: 201-939-2400, 800-272-7336

BETA FLEXPRO

Flexo System Analyzer

The Benefits Detect process variation before expensive errors propagate through the system. Automatic data collection, plotting, and statistical analysis keeps the operator informed and the process on target. The built-in calibration function and target system provides maximum accuracy and inter-instrument agreement across the plant and around the world.

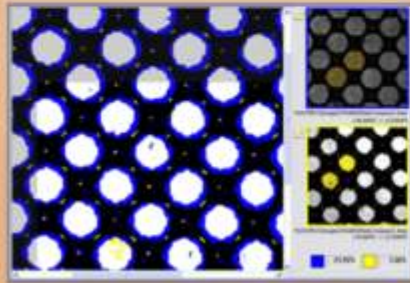
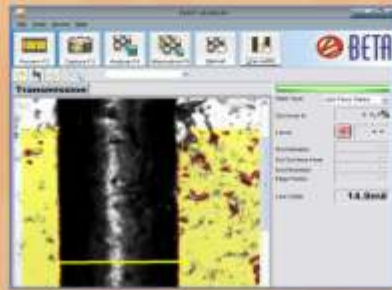


Image Comparison

Automatically rotates, scales, and overlays images to display and measure differences in dot area. See dot size change from mask to plate to print, plant to plant, or week to week. See changes in the process or materials, the plant or the method, before expensive errors spread through the system.



Bar Width Analysis

with automatic edge detection eliminates operator error and measures in compliance with industry standards.

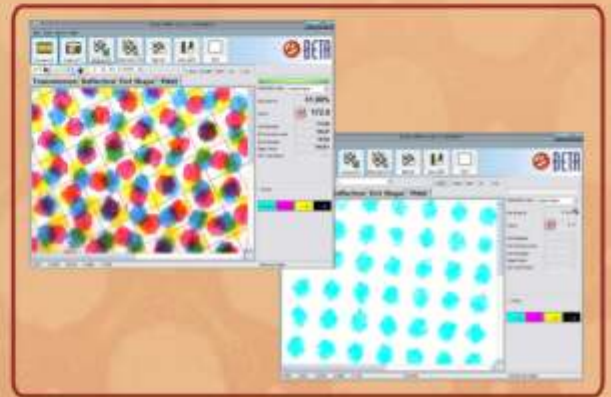
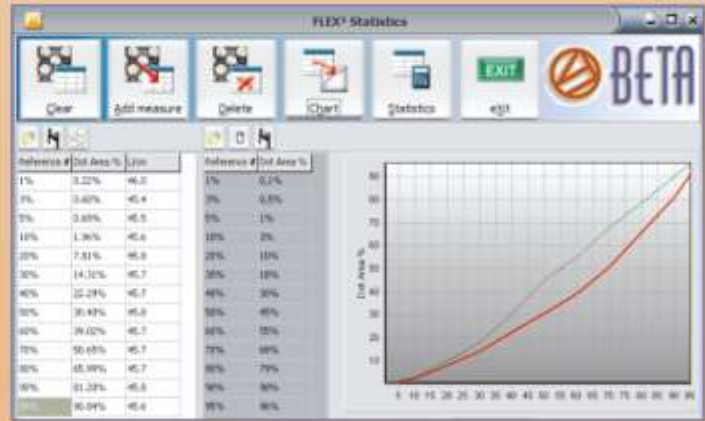


Image Color Separation & Analysis

from printed halftones, separated and analyzed for true halftone dot area analysis & correction. Useful for printing without targets.

The Problem Process variability, uncertain results, wasted material

The Solution The BetaFlex system simplifies process control with a familiar interface, unparalleled accuracy, and a powerful toolbox of functions



Sample Types

Halftone Film, Pos. & Neg.

Laser Ablation Masks

Transparent Flexo Plates

Opaque Elastomer Plates

Offset Plates, Paper, Film Color Prints

Camera & Illumination Hardware

Camera USB2.0

2D TOP VIEW Image resolution

3D OBLIQUE VIEW Image resolution

Transmission Mode

Reflection RGB & White Mode (Color Print Analysis)

35-300 Ipi Line Ruling Measuring

Betaflex PRO

Betaflex Xpress



1.3MPixel

1.3MPixel

14000 ppi

14000 ppi



SYSTEM REQUIREMENTS

- Windows 2000, XP, Seven
- 1 GB RAM • 1 GHz Processor
- USB2.0 port • 1024x768 display
- 100 MB for program & images

HARDWARE SPECIFICATIONS

- 1.3MegaPixel mono camera
- USB powered •1.7microns/pixel
- Self-contained case 6x8x15in.
- Weight 10lbs.

FUNCTION SUMMARY

- DOT area%, diameter, perimeter surface area, edge factor
- AM & FM dot area • Line Width
- Mean, Range, Standard Deviation

BETAFLEX PRO BETAFLEX XPRESS

Sample Types

Halftone Pos. & Neg. Film.....	<input type="checkbox"/>	<input type="checkbox"/>
Laser Ablation Mask.....	<input type="checkbox"/>	<input type="checkbox"/>
Transparent Flexo Plates.....	<input type="checkbox"/>	<input type="checkbox"/>
Opaque Elastomer Plates.....	<input type="checkbox"/>	<input type="checkbox"/>
Offset Plates.....	<input type="checkbox"/>	<input type="checkbox"/>
Color Print on Paper & Film.....	<input type="checkbox"/>	<input type="checkbox"/>

Camera Hardware

Camera USB2.0.....	1.3MPixel.....	1.3MPixel
2 D TOP VIEW Image resolution.....	1.7µ/Pixel.....	1.7µ/Pixel
3 D OBLIQUE VIEW Image resolution.....	1µ/Pixel	

Illumination

Transmission.....	<input type="checkbox"/>	<input type="checkbox"/>
Reflection RGB & White.....	<input type="checkbox"/>	<input type="checkbox"/>
3D Illumination.....	<input type="checkbox"/>	<input type="checkbox"/>

Measurement Results and Functions

Dot Area 0.5%..98% % in 0.01%.....	<input type="checkbox"/>	<input type="checkbox"/>
Screen ruling	35 LPI-300 LPI		35 LPI-300 LPI
Dot Diameter 0.1 µ / 0.1mil.....	<input type="checkbox"/>	<input type="checkbox"/>
Dot Surface Area 1µ ² / 1mil ²	<input type="checkbox"/>	<input type="checkbox"/>
Dot Perimeter & Edge Factor µ / mil.....	<input type="checkbox"/>	<input type="checkbox"/>
Mask Stain Density.....	<input type="checkbox"/>	<input type="checkbox"/>
Auto Line Width by click in 0.1 µ / 0.1mil.....	<input type="checkbox"/>	<input type="checkbox"/>
Auto, Manual, & Preset screen ruling.....	<input type="checkbox"/>	<input type="checkbox"/>
Fast alternative selection with drop down list....	<input type="checkbox"/>	<input type="checkbox"/>
Full FM Screen Analyses.....	<input type="checkbox"/>	<input type="checkbox"/>
Manual Dot selection by click.....	<input type="checkbox"/>	<input type="checkbox"/>
Local Magnifier function.....	<input type="checkbox"/>	<input type="checkbox"/>
Native Image Comparison.....	<input type="checkbox"/>	<input type="checkbox"/>
2D Distance measured w/ruler 0.1 µ / 0.1mil.....	<input type="checkbox"/>	<input type="checkbox"/>
2D Angle measurement with ruler in 0.1ø.....	<input type="checkbox"/>	<input type="checkbox"/>
Dot Structure Index.....	<input type="checkbox"/>	<input type="checkbox"/>
Dot Diameter at -10µ, -30µ, -60µ depth.....	<input type="checkbox"/>	<input type="checkbox"/>
3D Minimum Dot Display.....	<input type="checkbox"/>	<input type="checkbox"/>
3D Diameter, Height, Angle 0.1 µ / 0.1mil, 0.1ø....	<input type="checkbox"/>	<input type="checkbox"/>
Full Image Exchange between devices.....	<input type="checkbox"/>	<input type="checkbox"/>

BETAFLEX PRO / BETAFLEX XPRESS

Statistical Functions & Report Generator

Dot Area Plot.....	<input type="checkbox"/>	<input type="checkbox"/>
Mean, Standard Deviation.....	<input type="checkbox"/>	<input type="checkbox"/>
Data Import and Export.....	<input type="checkbox"/>	<input type="checkbox"/>
Configurable Report with include/exclude list....	<input type="checkbox"/>	<input type="checkbox"/>
Measurement data or images.....	<input type="checkbox"/>	<input type="checkbox"/>

Betaflex PRO Sleeve Adapter



Add the benefits of Betaflex PRO or Betaflex XPress systems to the efficiency of sleeve production

Add the sleeve adapter to the Betaflex PRO or Betaflex XPress and conveniently measure the widest range of translucent sleeves.

Dual transmission illuminators produce sharp, high-contrast images for accurate halftone dot analysis.

Illumination:

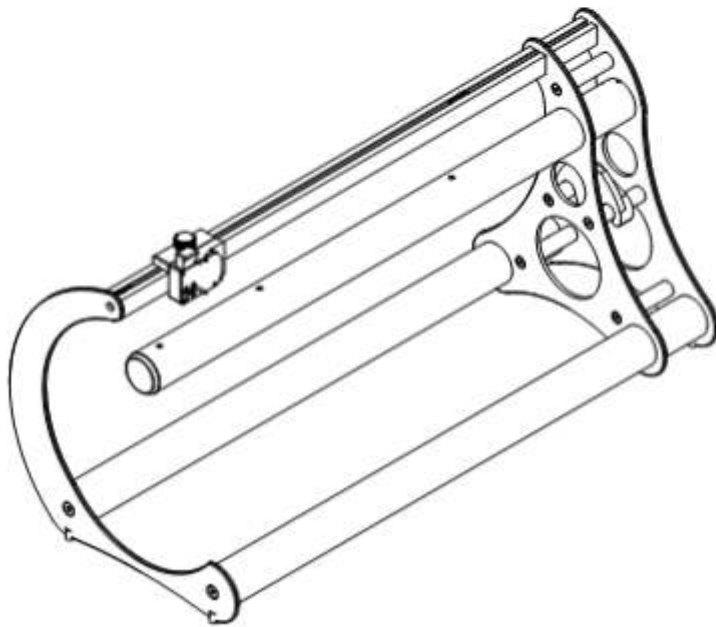
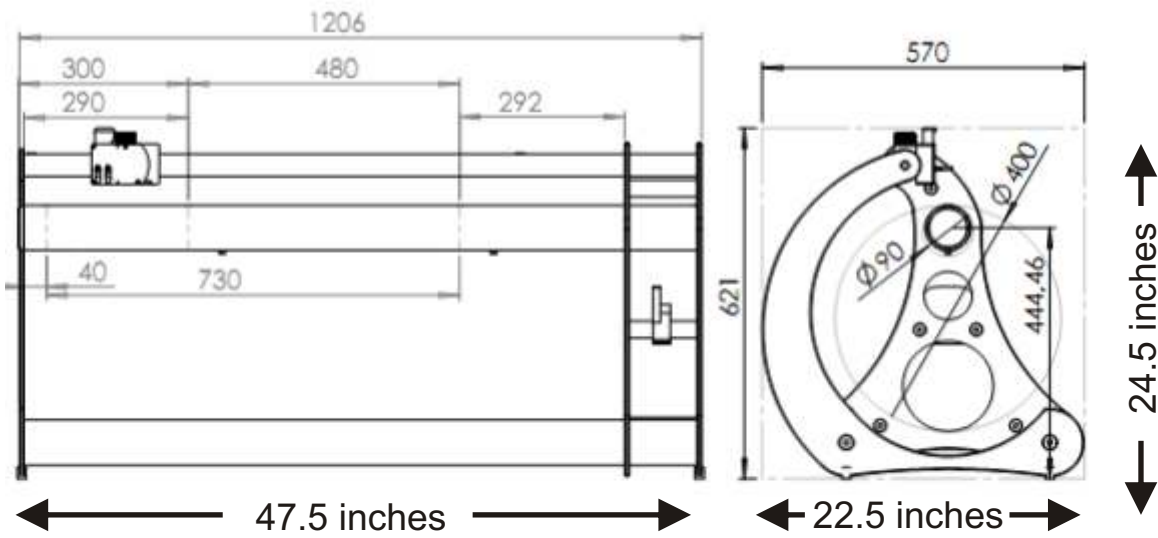
- Two collimated transmission light sources, one near each end of the sleeve support
- White, Red, Green, and Blue reflection light sources mounted within the sensor
- 3D mode illuminator mounted within the sensor

Format:

Cut off: 12" to 49" (300mm - 1250mm)
Diameter: 3.75" to 15.7" (95.5mm - 398mm)
Width: Maximum 80" (2000mm)

Betaflex PRO Sleeve Adapter

Dimensions and Layout



- Provides precise alignment of sensor to sleeve surface
- Convenient working position on standard table height
- Includes powered USB hub and cable management